



la Biennale di Venezia

15. Mostra
Internazionale
di Architettura



BIENNALE
ARCHITETTURA
2016

REPORTING
FROM
THE FRONT

28.5-27.11
VENICE

GUIDE

WALKING THE TALK OF CLIMATE CHANGE.**THE MUSEUM OF CLIMATE
IN LLEIDA BY TONI GIRONÈS.**

The architect started by questioning the brief of the competition held in 2008 for the Museum of Climate in Lleida, where a container (museum/building) with a steady temperature all year round (18°C to 24°C) was expected to communicate content (the weather) in a sequence of rooms. The counterproposal to the mayor (public promoter of the project) was to transform the climate itself at the point of the proposal, working with the four natural elements, dissolving the limits of the container. By downgrading the artificial condition of the construction into something embedded in the environment, they were able to almost double the working area, building a park as part of the museum by optimizing soil movements and site operations.

With this concept of change (transforming the container into the content) and the consequent elimination of artificial climate control systems, the construction budget was halved. But this dissolution of the classic museum box as a container is hardly a dissolution of the physical quality of the architecture. On the contrary, the material reality of the project is extremely direct.

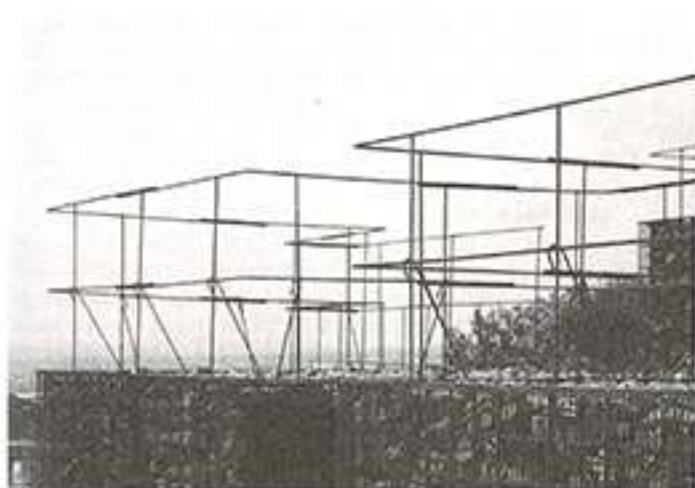
The simplest, even the most ordinary, materials are used in such a way that they transform not only the construction's skin but also its flesh. Iron bars, brick, and concrete are delicate and powerful elements at the same time. The way the perforated brick allows for a view (and air and temperature) when perpendicular to the wall (ethereal) but becomes a mass as soon as you look along the wall (opaque), and the way the iron bars are gentle and firm—both foliage and fence—makes the building very physical and abstract at the same time. This is very rarely achieved in architecture.

Participant

ESTUDI D'ARQUITECTURA
TONI GIRONÈS

Title

THE CLIMATE BATTLE (THE MUSEUM OF CLIMATE
IN LLEIDA CITY)



Above: Estudi d'Arquitectura Toni Gironés,
revamping the natural archaeological site
of Can Tacó, Montmeló-Montornès del Vallès, Barcelona,
Spain, 2012. Photo Aitor Estévez
Below: Estudi d'Arquitectura Toni Gironés,
The Museum of Climate, Lleida, Spain, 2015.
Photo Beatriz Morales López (Estudi d'Arquitectura
Toni Gironés)